

PRODUCT INFORMATION

SQUARE OFFSET PULL HANDLE - BACK TO BACK

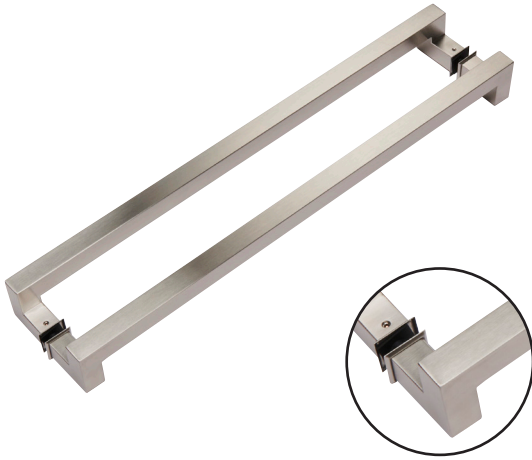
SPECIFICATION

Fixings are included for glass doors (including washers) and for timber/aluminium doors, up to 54mm thickness. Longer fixing bolts are available for thicker doors, please contact sales@wellinguk.com Sold as Pair.

PRODUCT DETAILS

Product Code	Centres	Square	Bolt Size	Finish
120.8100.01	600mm	25x25mm	M8	Satin Stainless Steel
120.8105.01	900mm			
120.8110.01	1200mm			

Product Code	Centres	Square	Bolt Size	Finish
120.8100.39	600mm	25x25mm	M8	Black
Timber Door Thickness 44-54mm			Glass Door Thickness 10-12mm	



FINISH



Satin Stainless Steel .01



Matt Black .39

TECHNICAL

