

## PRODUCT INFORMATION

### DECO LEVER HANDLE SET

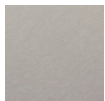
#### SPECIFICATION

One of our most popular lever handles used for commercial projects, such as office refurbishments  
BS 8300 DDA Compliant  
Push On Rose

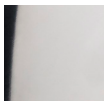
#### PRODUCT DETAILS

Product Code	Finish	Rose Size	Handle Diameter	DDA BS8300
370.7740.01	Satin Stainless Steel	52mm x 8mm	19mm	Yes
370.7740.02	Polished Stainless Steel			
370.7740.03	Polished Brass			
370.7740.14	Antique Brass			
370.7740.26	Dark Bronze			
370.7740.39	Black			
370.7740.43	Copper			
370.7740.72	White			
370.7740.76	Satin Brass			

#### FINISH



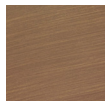
Satin Stainless Steel .01



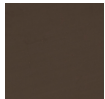
Polished Stainless Steel .02



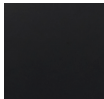
Eltro Plated Brass .03



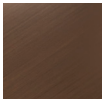
Antique Brass Plated .14



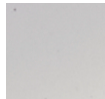
Dark Bronze Plated .26



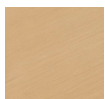
Matt Black .39



Copper Plated .43



Matt White .72



Satin Brass Plated .76

#### TECHNICAL

