

PRODUCT INFORMATION

EURO PROFILE CYLINDER FINGER PULL

SPECIFICATION

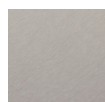
For use with our range of euro profile cylinders
Sold as each



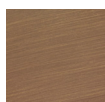
PRODUCT DETAILS

Product Code	Finish	Profile	Sold as
410.7061.01	Satin Stainless Steel	Euro Profile	Each
410.7061.14	Antique Brass		
410.7061.26	Dark Bronze		
410.7061.39	Black		
410.7061.43	Copper		
410.7061.72	White		
410.7061.76	Satin Brass		

FINISH



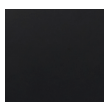
Satin Stainless Steel .01



Antique Brass Plated .14



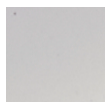
Dark Bronze Plated .26



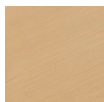
Matt Black .39



Copper Plated .43



Matt White .72



Satin Brass Plated .76

TECHNICAL