

UG SLIDING DOOR KITS

UG CONCEALED SLIDING DOOR KIT

Product Code	Finish	Max Weight	Door Type	Track Length	Glass Thickness	Cycle Tested	Included
570.8000.01	Satin Stainless Steel	80kg	Single	2000mm	10-12.8mm	100,000	1 x Single Track 2000mm 1 x Floor Guide 2 x End Caps 2 x Stops 2 x Carrier
570.8000.39	Black						
570.8002.01	Satin Stainless Steel	150kg	Single	2000mm	10-12.8mm	100,000	
570.8002.39	Black						
570.8001.01	Satin Stainless Steel	80kg	Double	4000mm	10-12.8mm	100,000	1 x Single Track 4000mm 2 x Floor Guide 2 x End Caps 4 x Stops 4 x Carrier
570.8001.39	Black						
570.8003.01	Satin Stainless Steel	150kg	Double	4000mm	10-12.8mm	100,000	
570.8003.39	Black						

Products above are stock items but due to the length of the product it is required by couriers to allow 3-5 days for delivery.

Our new UG sliding glass door system, which covers a wide range of applications and includes options such as soft-close and synchro-opening/closing.

EN 1527 approved - tested to **100,000 cycles** ensuring **long durability** with **silent movement**

One adjustable screw for **+/-1/8" (3.5mm) height adjustment** and the **anti-failing** in front system

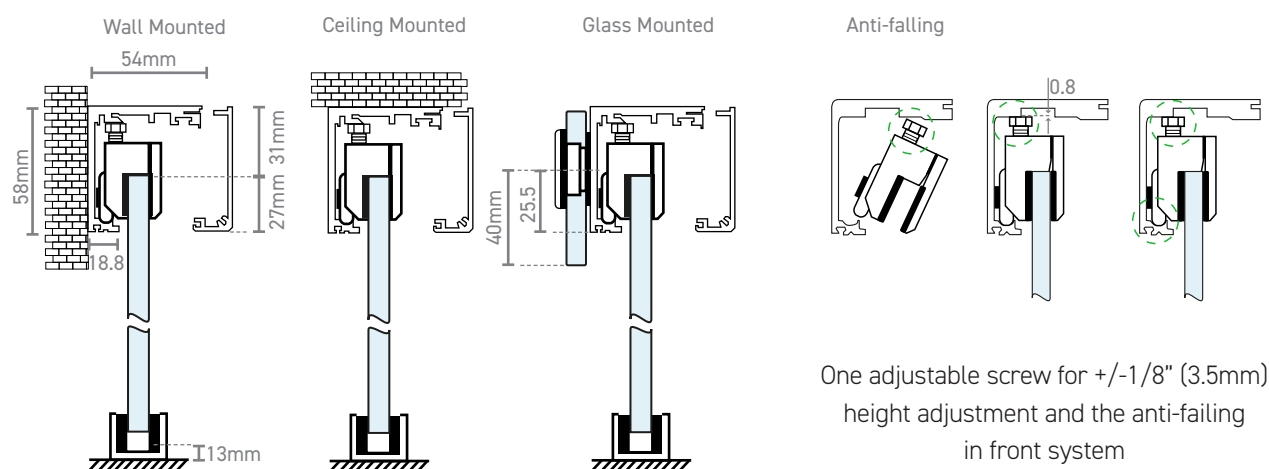
A single track that is suitable for **wall, ceiling and glass mounted applications**

Made to measure carriage and track length, cutting options available. Speak with one of our technical advisors.

The 150kg carriage-heavy duty is designed for maximum 100~150kgs, when pre-assembled the carriage with 0.8mm gaskets for 10-12.8mm.

Create a sliding door system that suits each project requirement with our technical advisors, from a rubber stopper to hydraulic soft closing stopper or synchronized double door system, we are here to help. The UG sliding door system is ideal for a range of uses in offices, living spaces and pocket doors, designed with no visible clamping as the parts are hidden within the compact tracking.

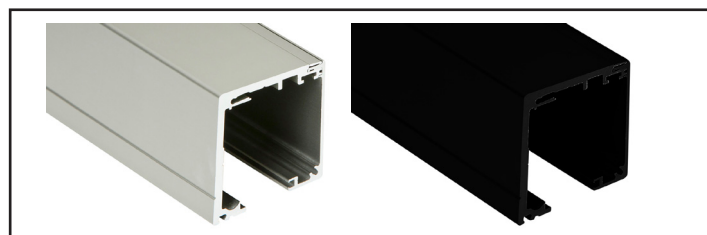
We recommend a maximum height-to-width ratio of 2.5:1 to ensure the door's centre of gravity is well-balanced.



UG SLIDING TRACK CLIP-ON-PROFILE

Product Code	Finish	Length
570.8808.01	Satin Stainless Steel	2000mm
570.8808.39	Black	
570.8809.01	Satin Stainless Steel	4000mm
570.8809.39	Black	

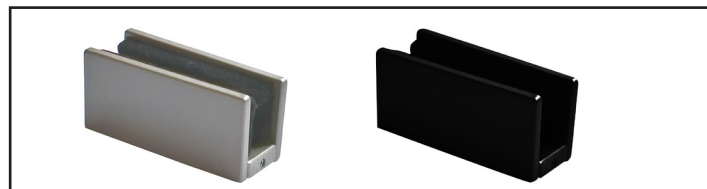
Can be cut to length if required



UG BOTTOM FLOOR GUIDE

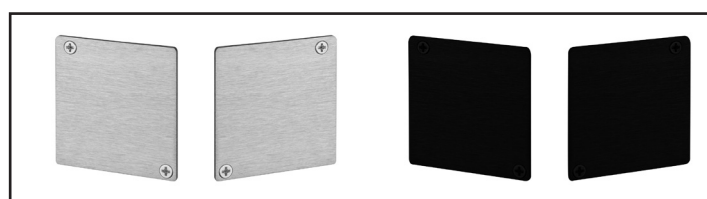
Product Code	Finish	Glass Thickness
570.8803.01	Satin Stainless Steel	8-13mm
570.8803.39	Black	

Adjustable width 8-13mm glass but can achieve 15mm wide glass in some situations



UG SLIDING TRACK END CAP

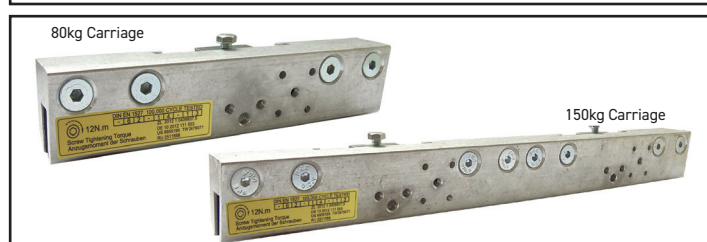
Product Code	Finish	Sold as
570.8802.01	Satin Stainless Steel	Pair
570.8802.39	Black	



UG SINGLE SLIDING CARRIAGE

Product Code	Weight	Sold as	Finish
570.8800.11	80kg	Each	Satin Anodised Aluminium
570.8805.11	150kg - Heavy Duty		

Sold as each - 2nr needed per door leaf.



UG STOPPER KIT

Product Code	Product	Sold as	Finish
570.8801.11	Left / Right	Pair	Satin Anodised Aluminium

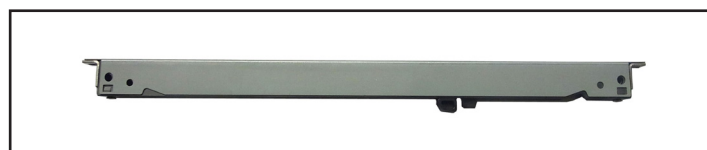
Black wire (in image) holds the door at that position but needs to be removed to install soft close mechanism.



UG SOFT CLOSE & OPEN KIT

Product Code	Weight	Min Door Width	Finish
570.8804.11	80kg	750mm	Satin Anodised Aluminium
570.8806.11	150kg		

Complete soft close mechanism set for one door. Operates on both opening and shutting positions. Suitable for use with synchro kit



UG TRACK TO GLASS OVERPANEL FIXINGS

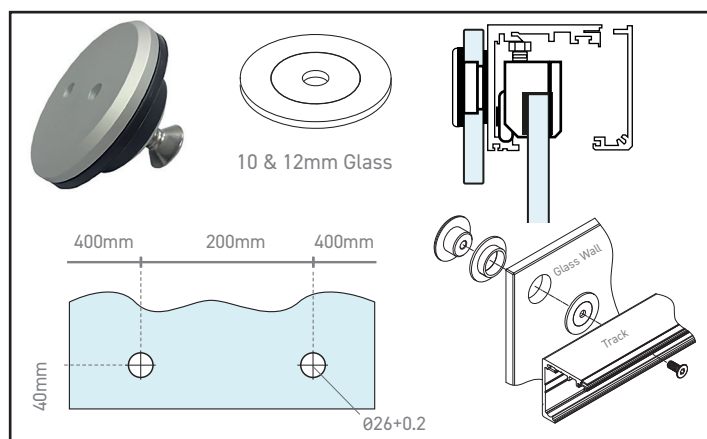
Product Code	Glass Thickness	Finish
570.8807.01	10-12mm	Satin Stainless Steel

Glass mounted fixture

It is recommended when fitting a 2 meter track you install with 6 glass fixings, positioning the centre 2 holes 200mm apart and then 1 fixing every 400mm thereafter, giving extra support in the centre of the track.

When installing a 4 meter track it is recommend to use 12 fixing with the centre 4 holes positioned 200mm apart and thereafter 1 fixing every 400mm.

If you have any questions or require further technical information please log online and visit our website or speak with one of technical advisors today.



V5-28-07-2025

For more information please contact

01451 824110 | sales@wellinguk.com | www.wellinguk.com

Welling Ironmongery Ltd, Unit R1, Bourton Industrial Park, Bourton on the Water GL54 2HQ

UG SYNCHRONIZED OPEN & CLOSE SLIDING MECHANISM

Product Code	Carriage Weight	Type	Finish
570.8816.11	80kg or 150kg	Double Doors	Satin Anodised Aluminium

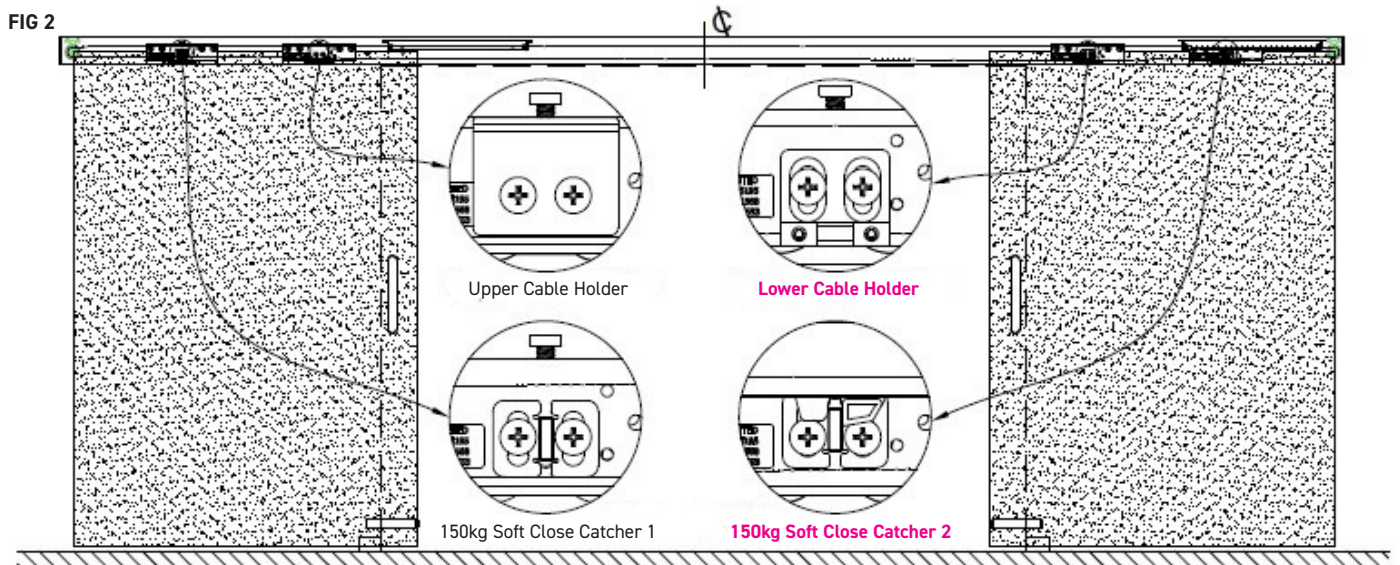
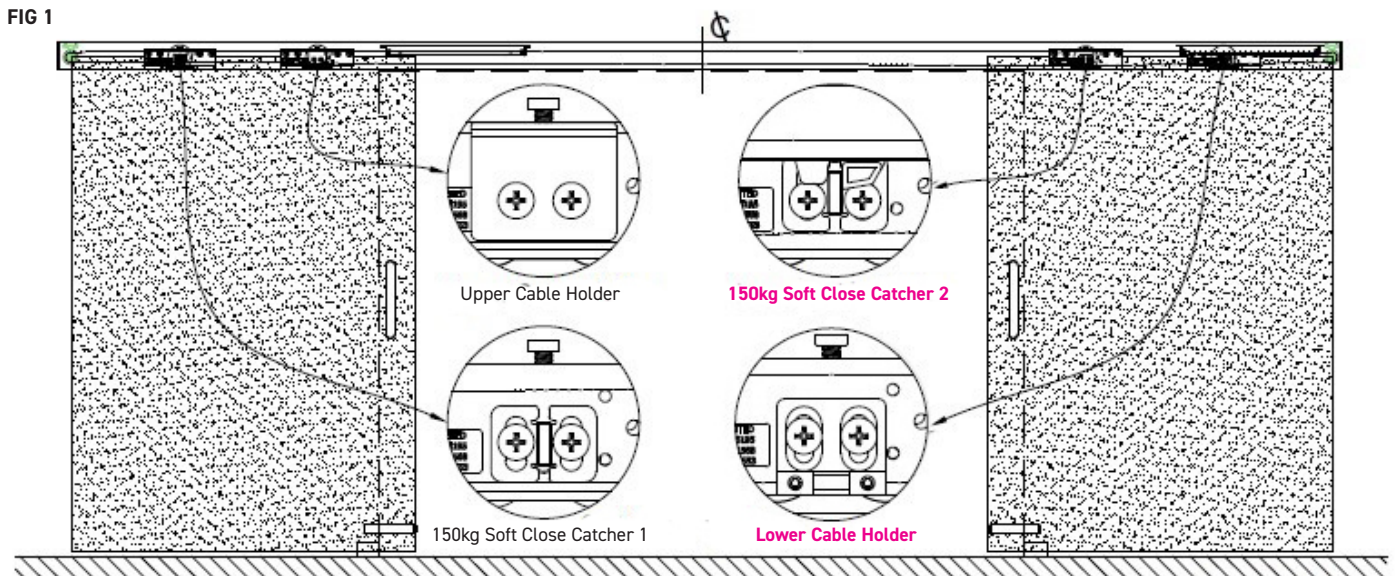
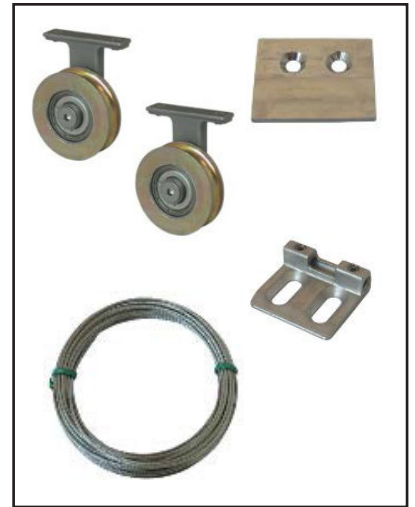
Synchronously Open/Close. Double Doors Only (2 doors)

When purchasing synchro kit alongside soft close mechanism for a set of double doors, consider these limitations:

1. For doors up to 80kg (each) purchase 1no set (not 2) of the 150kg soft close mechanism. You can try this method on doors over 80kg, but may result in 'weak' soft close & open function.
2. For doors over 80kg (each) purchase 1no set (not 2) of the 150kg soft close mechanisms, and this will only allow soft close on either the "doors opening" cycle, or the "doors closing" cycle.

The UG sliding door system hangs each door leaf with two clamp on carriages (either 80kg or 150kg max per leaf). The soft close mechanism works by installing a hydraulic "damper/ catcher" and a bracket on each of the 4no sliding carriages, to operate the soft close function, at both ends of the opening & closing cycle. The synchronized cable kit which operates by a bracket being fixed to one of the carriages from each of the pair of doors in question. Therefore, when installing both the synchronization kit and soft close kit, you cannot install all four soft close dampers (to allow both leaves soft close and opening), but only two, giving the options as points 1. And 2. above.

Option 1 from the above is achieved by installing Fig One diagram to follow
Option 2 from the above is achieved by installing Fig Two diagram to follow



V5-28-07-2025