

## HIDEAWAY POCKET SLIDING DOOR KITS

Product Code	Product	Max Door Width	Max Door Height	Door Thickness
810.6173.11	H30	762mm	2032mm	35-44mm
810.6174.11	H36	915mm		
810.6175.11	H42	1067mm		

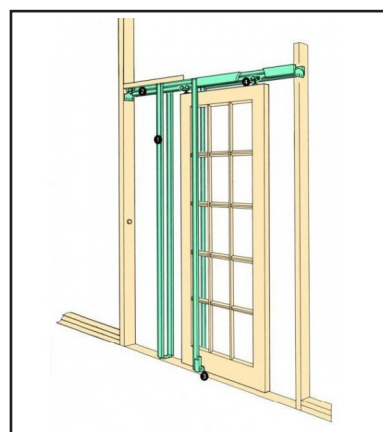
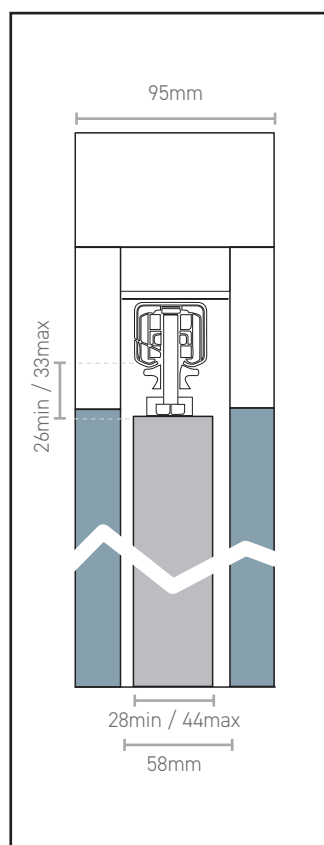
A good quality pocket sliding door kit, suitable for both commercial and residential projects. Handles and locks sold separately

Full kit, including frame, track, rollers/hangers and accessories

120mm finished wall thickness when using a 35-44mm thick door

### KEY FEATURES

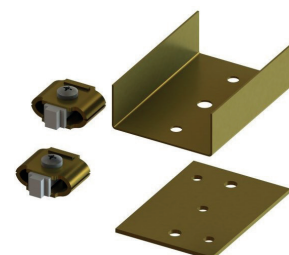
Pocket Door  
Finished Wall Thickness  
115-120mm  
Max Door Weight 56kg



## HIDEAWAY JOINTING KIT FOR DOUBLE POCKET DOORS

Product Code	Type	Sold as
810.6000.11	Double Pocket Doors	Pair

A jointing kit to join 2x single Hideaway pocket kits together to make a double kit  
Suits all Hideaway pocket door kits



For more information please contact

01451 824110 | [sales@wellinguk.com](mailto:sales@wellinguk.com) | [www.wellinguk.com](http://www.wellinguk.com)

Welling Ironmongery Ltd, Unit R1, Bourton Industrial Park, Bourton on the Water GL54 2HQ