

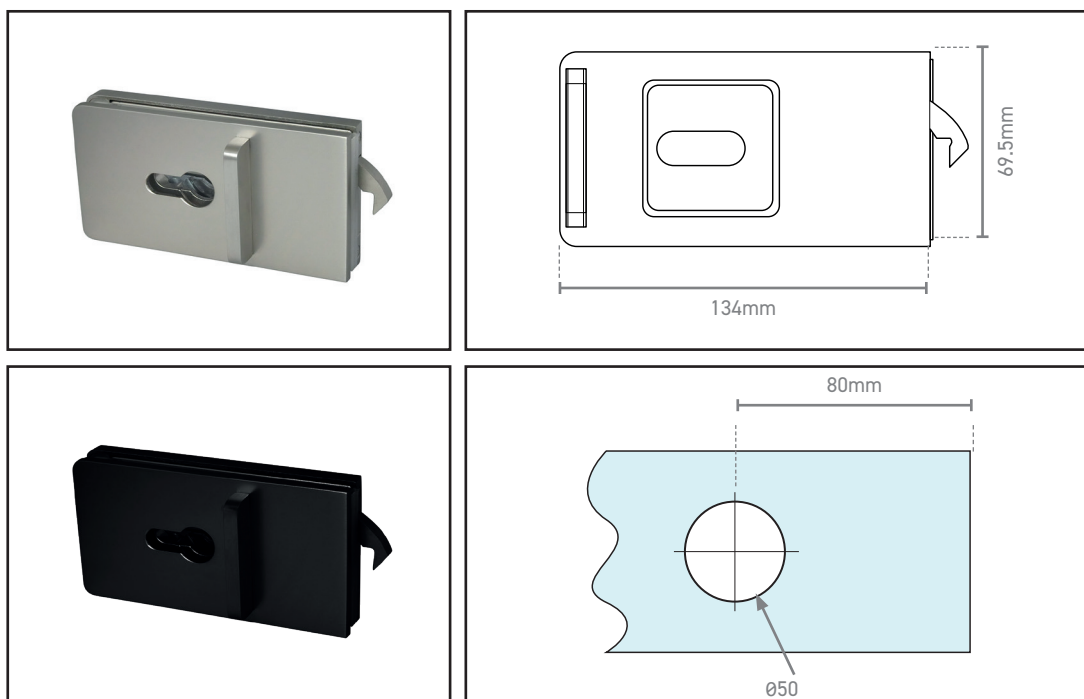
GLASS SLIDING DOOR FITTINGS

Here at Welling we have introduced a Glass Door Lock for 10-12mm thick glass. Designed with glass cut-out diameter of 50mm to allow for easy replacement round handle while also being reversible for right to left hand and inside to outside. To complete the look there is also a matching strike box available in both Satin Stainless Steel and Black finishes, designed with a height and depth adjustment +/-3.5mm suitable for glass-to-glass, glass-to-wall/frame and glass-to-fixed glass

SLIDING GLASS DOOR SLIM LOCK EURO PROFILE

Product Code	Finish	Handed	Glass Thickness
570.8811.01	Satin Stainless Steel	No - reversible	10-12mm
570.8811.39	Black		

A high quality hook-type sliding door lock. Suitable for glass-to-glass, glass-to-wall/frame, glass-to-fixed glass Matching strike box available. Operated by euro cylinder, sold separately



OPEN RECESSED GLASS SLIDING DOOR HANDLE

Product Code	Finish	Diameter	Hole Size	Glass Thickness
570.0104.01	SSS	60mm	50mm	8-12mm
570.0104.39	Black			

Sold as a 'pair' of handles, for 1 door leaf



SLIDING GLASS DOOR FLAT STRIKE

Product Code	Finish	Glass Thickness
570.8815.01	Satin Stainless Steel	10-12mm
570.8815.39	Black	

A strike box/keep for the 570.8811.01/39 sliding door lock



For more information please contact

01451 824110 | sales@wellinguk.com | www.wellinguk.com

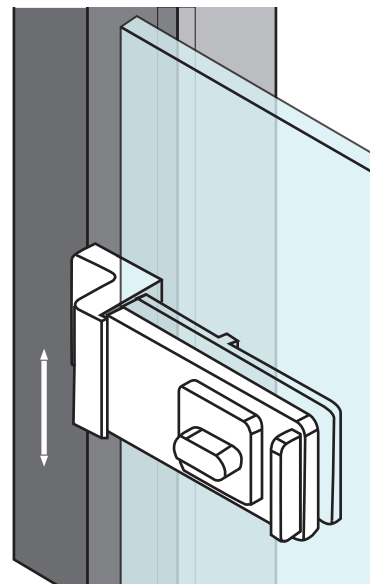
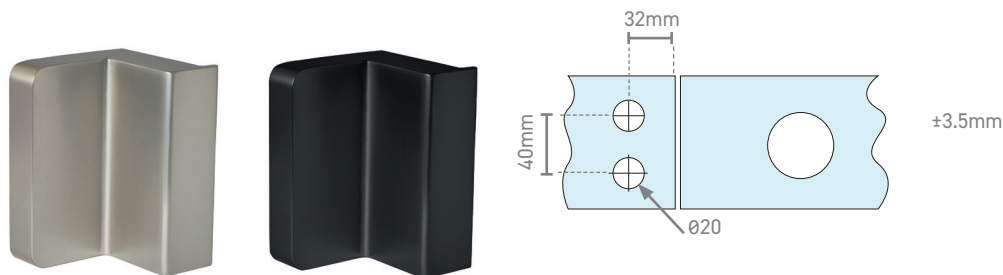
Welling Ironmongery Ltd, Unit R1, Bourton Industrial Park, Bourton on the Water GL54 2HQ

GLASS SLIDING DOOR FITTINGS

SLIDING GLASS DOOR LOCK STRIKE - GLASS TO WALL - OFFSET

Product Code	Finish	Type	Glass Thickness
570.8812.01	Satin Stainless Steel	Glass to Wall	10-12mm
570.8812.39	Black		

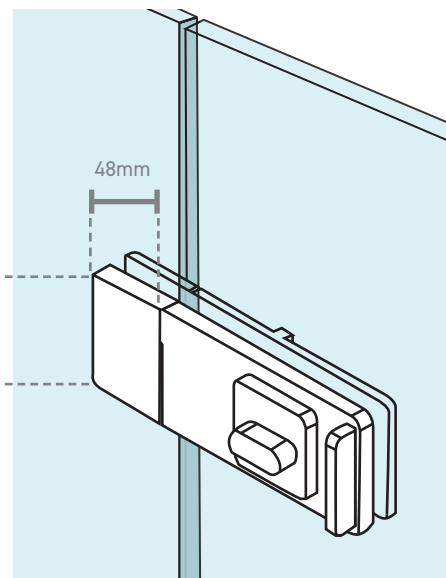
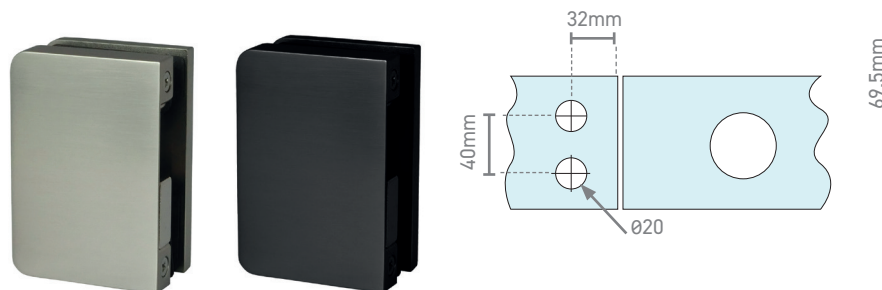
Solid wall mounted - Offset. Height a adjustment +/- 3.5mm.
Interchangeable from left hand and right hand.



SLIDING GLASS DOOR LOCK STRIKE BOX - GLASS TO GLASS

Product Code	Finish	Type	Glass Thickness
570.8813.01	Satin Stainless Steel	Glass to Glass	10-12mm
570.8813.39	Black		

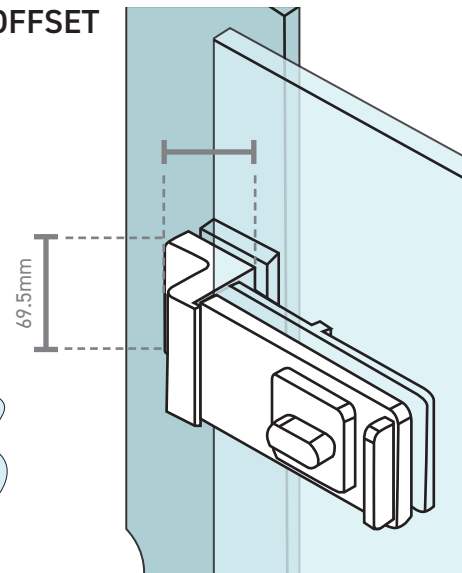
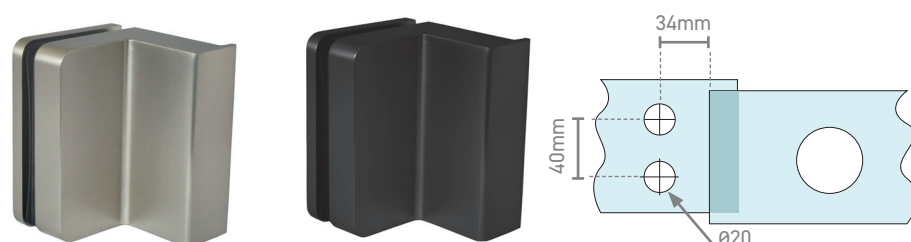
Glass to Glass, suitable for in-line applications for example double glass doors where the leading edges meet



SLIDING GLASS DOOR LOCK STRIKE BOX - GLASS TO GLASS - OFFSET

Product Code	Finish	Type	Glass Thickness
570.8814.01	Satin Stainless Steel	Glass to Glass	10-12mm
570.8814.39	Black		

Glass to Glass, suitable for glass side panel mounting



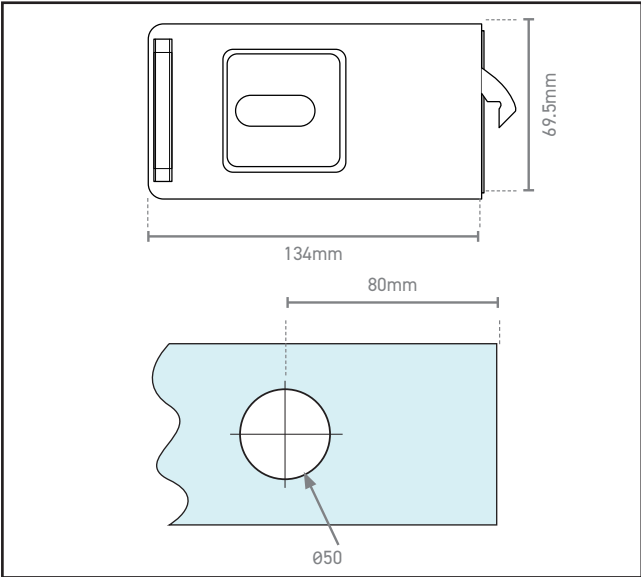
For more information please contact

01451 824110 | sales@wellinguk.com | www.wellinguk.com

Welling Ironmongery Ltd, Unit R1, Bourton Industrial Park, Bourton on the Water GL54 2HQ

570.8811.01

Sliding Glass Door Slim Lock - Euro Profile



Product Specification

A high quality hook-type sliding door lock
Suitable for glass-to-glass, glass-to-wall/frame, glass-to-fixed glass Matching strike box available
Operated by euro cylinder, sold separately

Specification

Finish	Satin Stainless Steel
Handed	No - reversible
Glass Thickness	10-12mm

Here at Welling we have introduced a Glass Door Lock for 10-12mm thick glass. Designed with glass cut-out diameter of 50mm to allow for easy replacement round handle while also being reversible for right to left hand and inside to outside.

To complete the look there is also a matching strike box available in both Satin Stainless Steel and Black finishes, designed with a height and depth adjustment +/-3.5mm suitable for glass-to-glass, glass-to-wall/frame and glass-to-fixed glass.

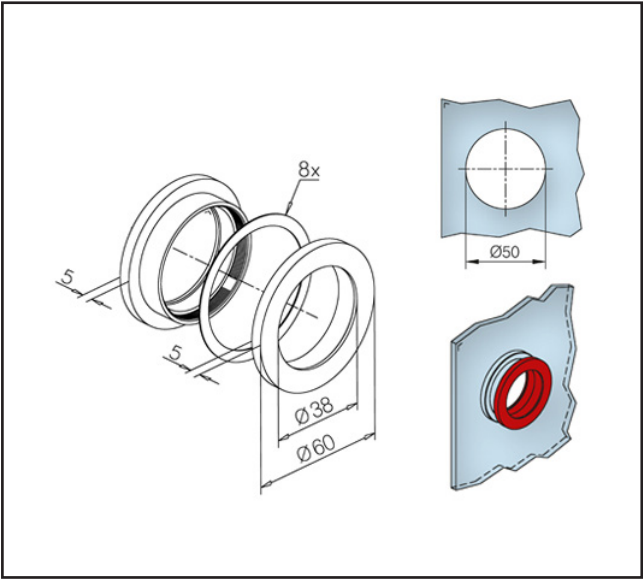
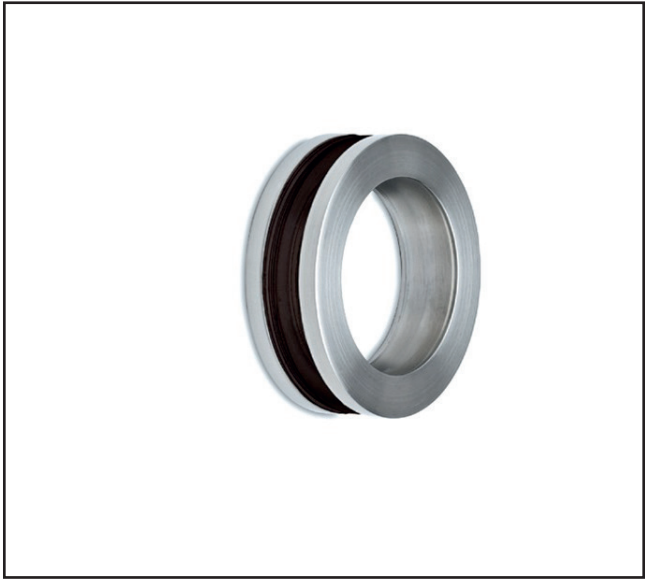
For more information please contact

01451 824110 | sales@wellinguk.com | www.wellinguk.com

Welling Ironmongery Ltd, Unit R1, Bourton Industrial Park, Bourton on the Water GL54 2HQ

570.0104.01

Open Recessed Glass Sliding Door Handle



Product Specification

An open recessed sliding door handle, that requires a hole through the glass
Sold as a 'pair' of handles, for 1 door leaf

Specification

Finish	Satin Stainless Steel
Diameter	60mm overall
Hole Size	50mm
Sold as	Set

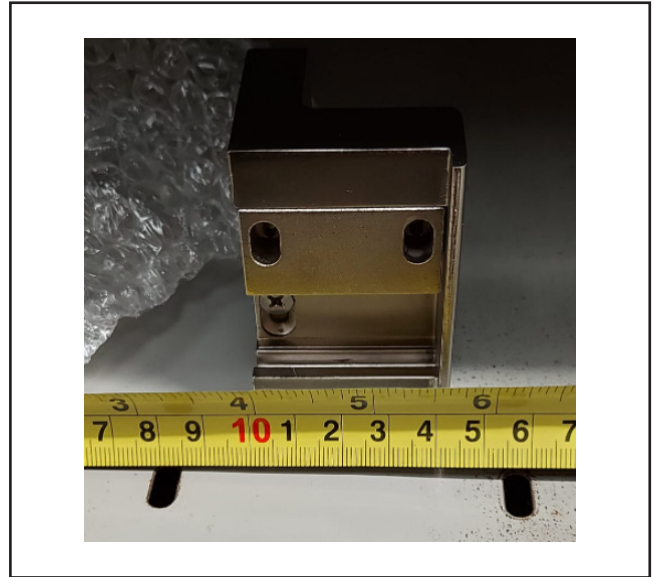
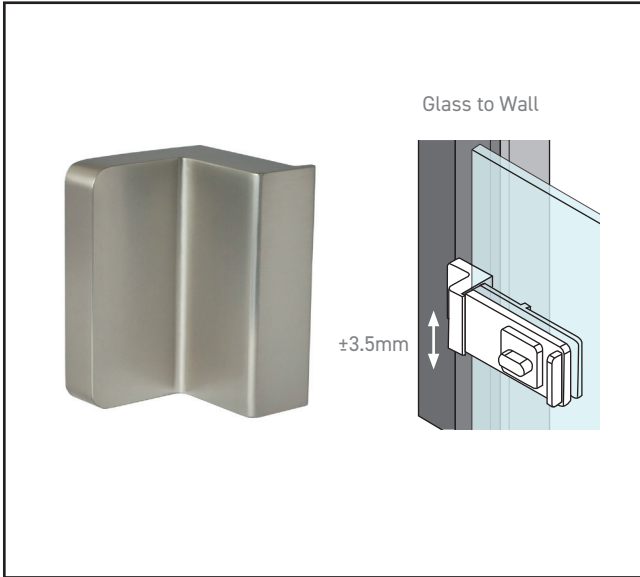
For more information please contact

01451 824110 | sales@wellinguk.com | www.wellinguk.com

Welling Ironmongery Ltd, Unit R1, Bourton Industrial Park, Bourton on the Water GL54 2HQ

570.8812.01

Sliding Glass Door Lock Strike - Glass to Wall - Offset

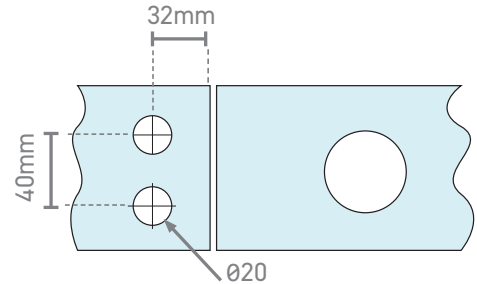


Product Specification

A strike box/keep for the 570.8811.01 sliding door lock

Solid wall mounted - Offset.

Height a adjustment $\pm 3.5\text{mm}$. Interchangeable from left hand and right hand.



Specification

Finish	Satin Stainless Steel
Handed	No - reversible
Glass Thickness	10-12mm
Type	Glass to Wall

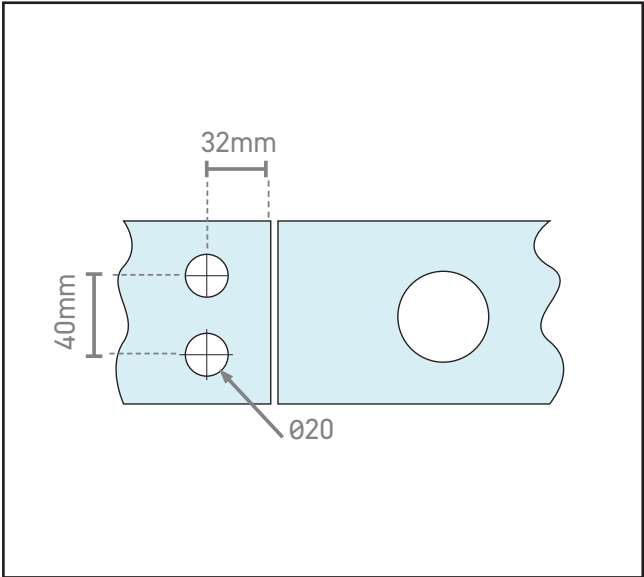
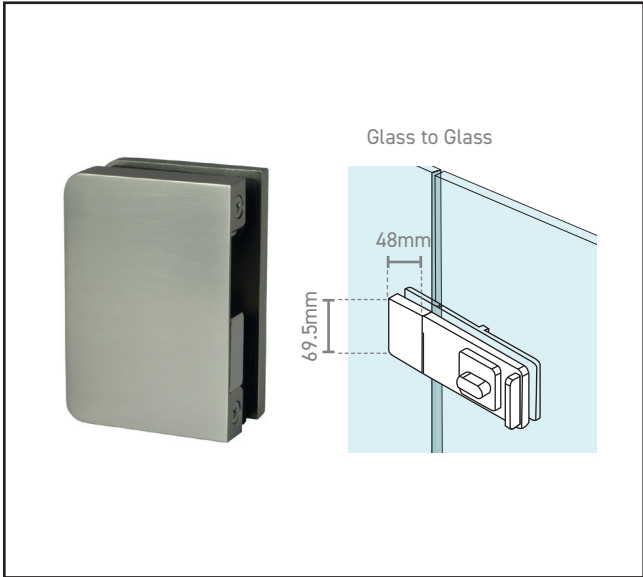
For more information please contact

01451 824110 | sales@wellinguk.com | www.wellinguk.com

Welling Ironmongery Ltd, Unit R1, Bourton Industrial Park, Bourton on the Water GL54 2HQ

570.8813.01

Sliding Glass Door Lock Strike Box - Glass to Glass



Product Specification

A strike box/keep for the 570.8811.01 sliding door lock

Glass to Glass, suitable for in-line applications for example double glass doors where the leading edges meet

Specification

Finish	Satin Stainless Steel
Handed	No - reversible
Glass Thickness	10-12mm
Type	Glass to Glass

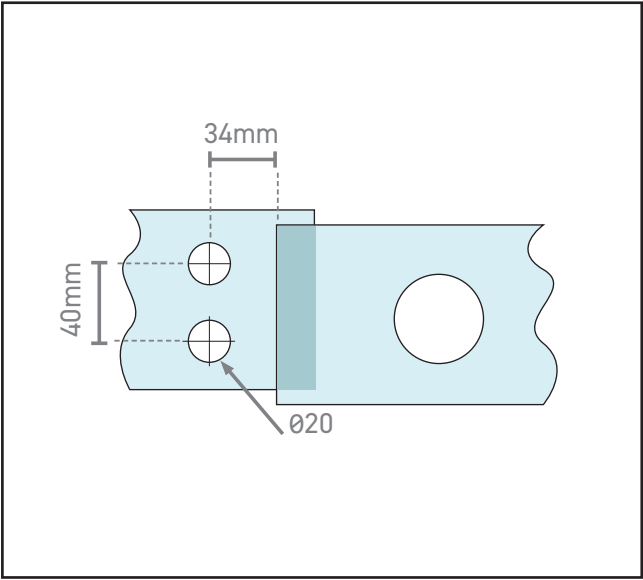
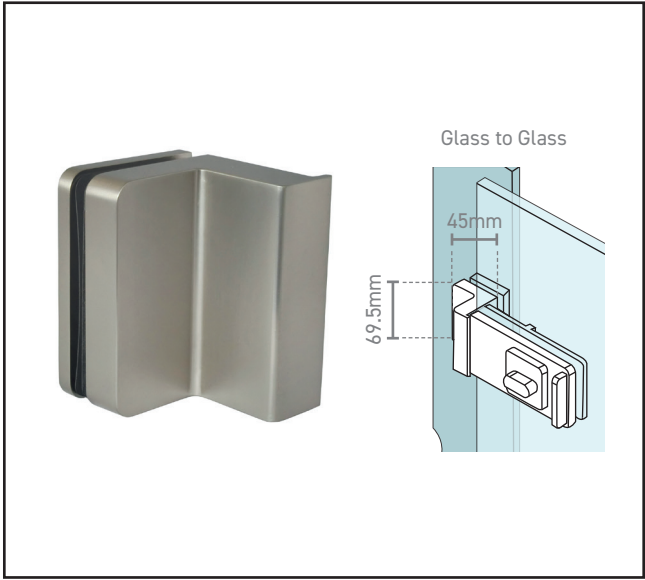
For more information please contact

01451 824110 | sales@wellinguk.com | www.wellinguk.com

Welling Ironmongery Ltd, Unit R1, Bourton Industrial Park, Bourton on the Water GL54 2HQ

570.8814.01

Sliding Glass Door Lock Strike Box - Glass to Glass



Product Specification

A strike box/keep for the 570.8811.01 sliding door lock

Glass to Glass, suitable for in-line applications for example double glass doors where the leading edges meet

Specification

Finish	Satin Stainless Steel
Handed	No - reversible
Glass Thickness	10-12mm
Type	Glass to Glass

For more information please contact

01451 824110 | sales@wellinguk.com | www.wellinguk.com

Welling Ironmongery Ltd, Unit R1, Bourton Industrial Park, Bourton on the Water GL54 2HQ