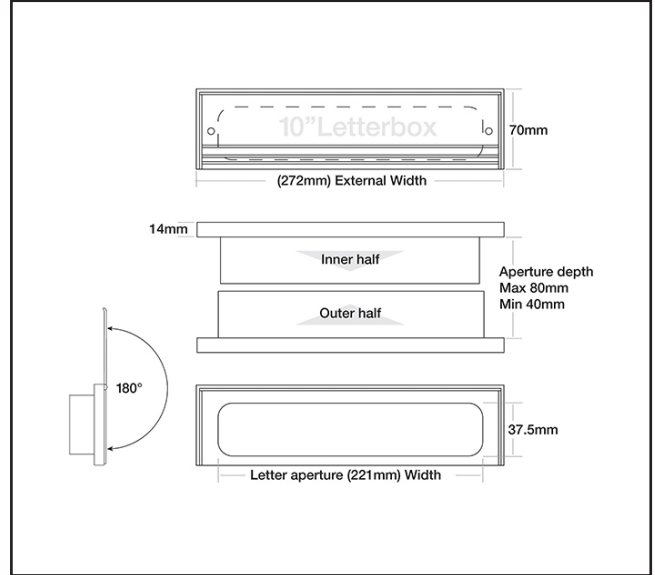


720.0301.11

272mm Fire Rated Letter Plate Set Black Frame - FD30



Product Specification

A stylish ABS framed, telescopic letterbox, with metal flaps and fitted with a high performance intumescent liner. In the event of fire the intumescent liner expands rapidly and seals of the letterbox opening, preventing the spread of fire and smoke whilst maintaining the integrity of the fire door assembly.

Letterbox flaps open to 180°. Black Frame

Specification

Finish	Satin Anodised Aluminium
Dimensions	272mm (w) x 70mm (h)
Door Thickness	Minimum 40mm - Maximum 80mm
Fire Rated	FD30
Fire Tested	BS 476 part 22: 1987 and BS EN 1634-1
Smoke Tested	BS 476 Part 31/1:1983
Acoustic tested	BS EN ISO 140-3:1995 Achieving 32dB Rw
Security tested	BS EN 13724 Clause 6.6.5. (Compliant within Scope of PAS 23/24)



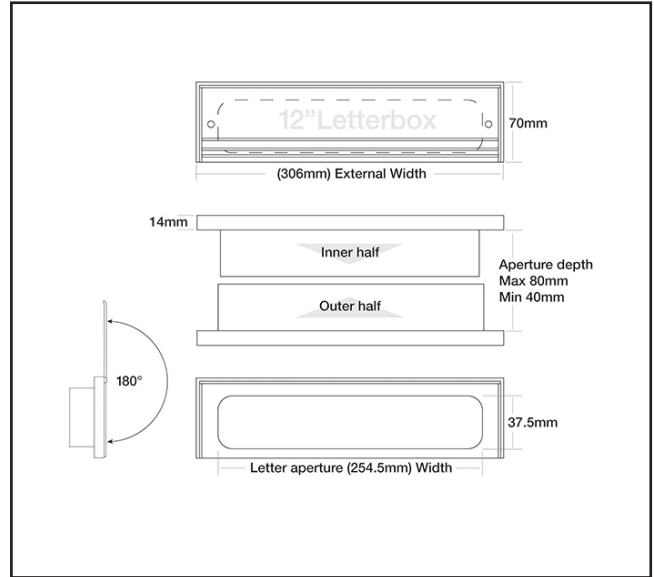
For more information please contact

01451 824110 | sales@wellinguk.com | www.wellinguk.com

Welling Ironmongery Ltd, Unit R1, Bourton Industrial Park, Bourton on the Water GL54 2HQ

720.0302.11

306mm Fire Rated Letter Plate Set Black Frame - FD30

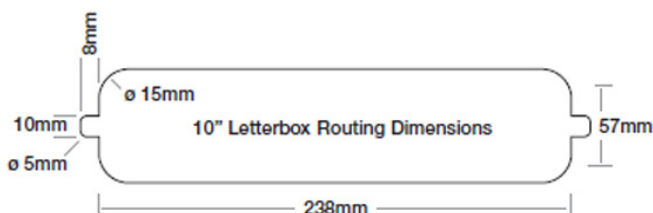


Product Specification

A stylish ABS framed, telescopic letterbox, with metal flaps and fitted with a high performance intumescent liner. In the event of fire the intumescent liner expands rapidly and seals off the letterbox opening, preventing the spread of fire and smoke whilst maintaining the integrity of the fire door assembly. Letterbox flaps open to 180°

Specification

Finish	Satin Anodised Aluminium Finish
Dimensions	306mm (w) x 70mm (h)
Door Thickness	Minimum 40mm - Maximum 80mm
Fire Rated	FD30
Fire Tested	BS 476 part 22: 1987 and BS EN 1634-1
Smoke Tested	BS 476 Part 31/1:1983
Acoustic tested	BS EN ISO 140-3:1995 Achieving 32dB Rw
Security tested	BS EN 13724 Clause 6.6.5. (Compliant within Scope of PAS 23/24)



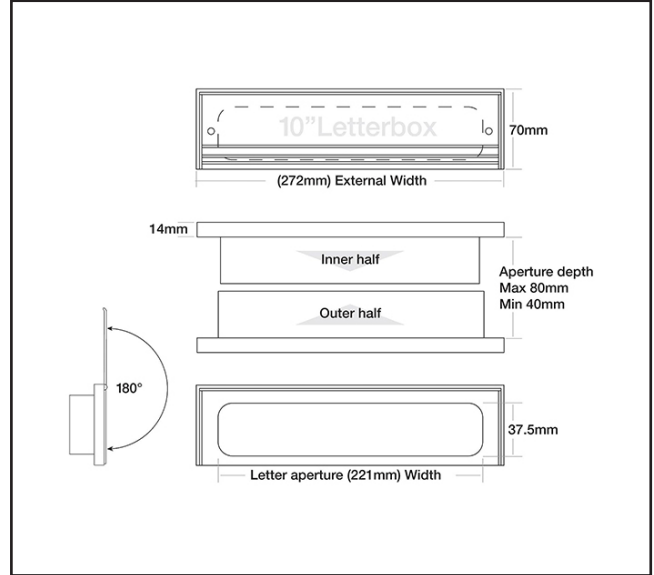
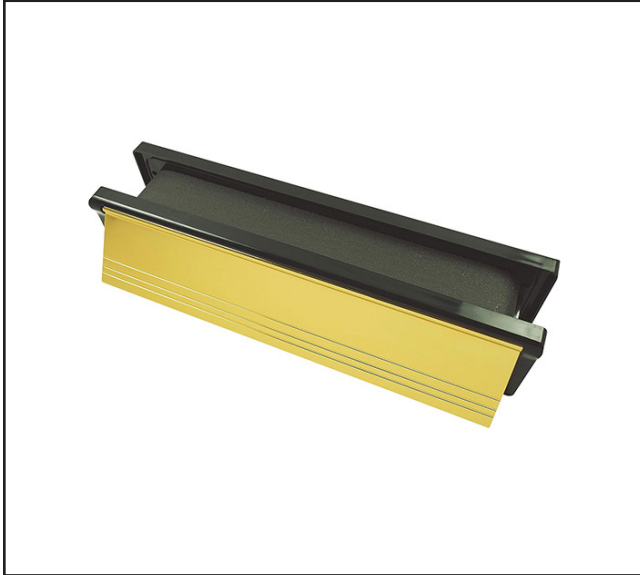
For more information please contact

01451 824110 | sales@wellinguk.com | www.wellinguk.com

Welling Ironmongery Ltd, Unit R1, Bourton Industrial Park, Bourton on the Water GL54 2HQ

720.0301.03

272mm Fire Rated Letter Plate Set Black Frame - FD30



Product Specification

A stylish ABS framed, telescopic letterbox, with metal flaps and fitted with a high performance intumescent liner. In the event of fire the intumescent liner expands rapidly and seals of the letterbox opening, preventing the spread of fire and smoke whilst maintaining the integrity of the fire door assembly. Letterbox flaps open to 180°

Specification

Finish	Gold Finish
Dimensions	272mm (w) x 70mm (h)
Door Thickness	Minimum 40mm - Maximum 80mm
Fire Rated	FD30
Fire Tested	BS 476 part 22: 1987 and BS EN 1634-1
Smoke Tested	BS 476 Part 31/1:1983
Acoustic tested	BS EN ISO 140-3:1995 Achieving 32dB Rw
Security tested	BS EN 13724 Clause 6.6.5. (Compliant within Scope of PAS 23/24)



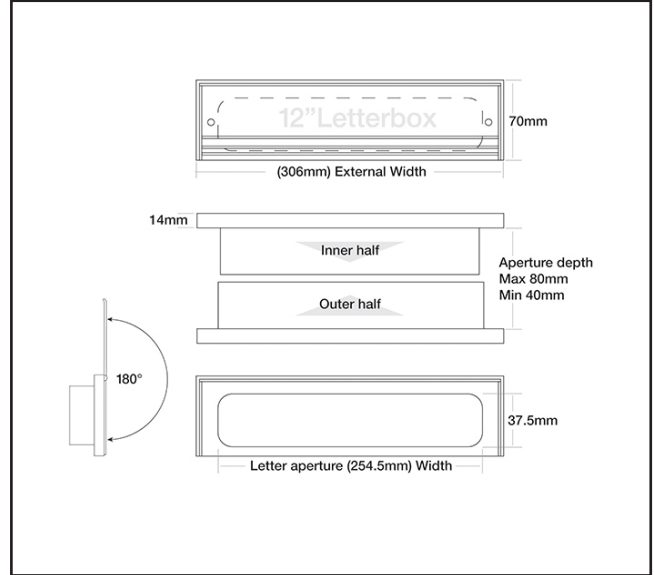
For more information please contact

01451 824110 | sales@wellinguk.com | www.wellinguk.com

Welling Ironmongery Ltd, Unit R1, Bourton Industrial Park, Bourton on the Water GL54 2HQ

720.0302.03

306mm Fire Rated Letter Plate Set Black Frame - FD30



Product Specification

A stylish ABS framed, telescopic letterbox, with metal flaps and fitted with a high performance intumescent liner. In the event of fire the intumescent liner expands rapidly and seals off the letterbox opening, preventing the spread of fire and smoke whilst maintaining the integrity of the fire door assembly. Letterbox flaps open to 180°

Specification

Finish	Gold Finish
Dimensions	306mm (w) x 70mm (h)
Door Thickness	Minimum 40mm - Maximum 80mm
Fire Rated	FD30
Fire Tested	BS 476 part 22: 1987 and BS EN 1634-1
Smoke Tested	BS 476 Part 31/1:1983
Acoustic tested	BS EN ISO 140-3:1995 Achieving 32dB Rw
Security tested	BS EN 13724 Clause 6.6.5. (Compliant within Scope of PAS 23/24)



For more information please contact

01451 824110 | sales@wellinguk.com | www.wellinguk.com

Welling Ironmongery Ltd, Unit R1, Bourton Industrial Park, Bourton on the Water GL54 2HQ