

DESIGNER D-SECTION T-BAR PULL HANDLES - GRADE 316 STAINLESS STEEL

BOLT THROUGH

Product Code	Centres	Length	Diameter	Finish
110.4251.01	300mm	400mm	25x10mm	SSS/Duo Grade 316
110.4252.01	600mm	700mm		

Timber Door Thickness 44-54mm

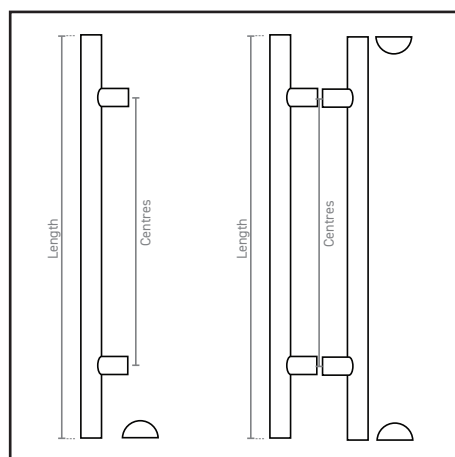
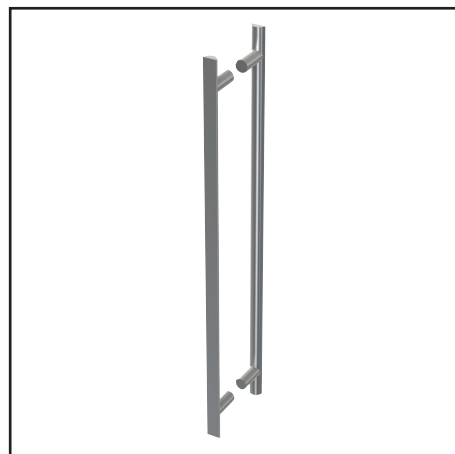
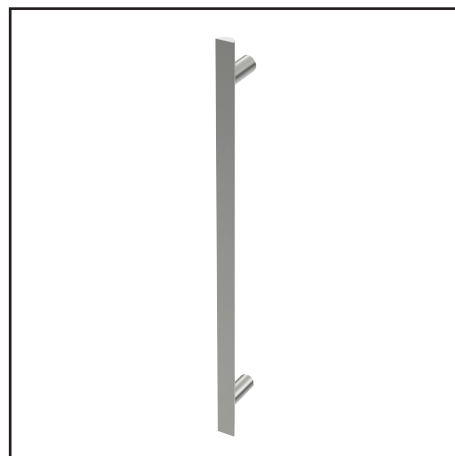
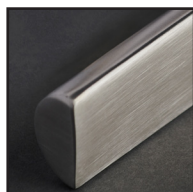
BACK TO BACK

Product Code	Centres	Length	Diameter	Finish
120.4251.01	300mm	400mm	25x10mm	SSS/Duo Grade 316
120.4252.01	600mm	700mm		

Glass Door Thickness 10-12mm

PRODUCT SPECIFICATION

Please specify at point of ordering which door type and thickness these pull handles are for, to ensure the correct fixings. The Designer range of pull handles are made to order, and do not work with spare fixings.



For more information please contact

01451 824110 | sales@wellinguk.com | www.wellinguk.com

Welling Ironmongery Ltd, Unit R1, Bourton Industrial Park, Bourton on the Water GL54 2HQ