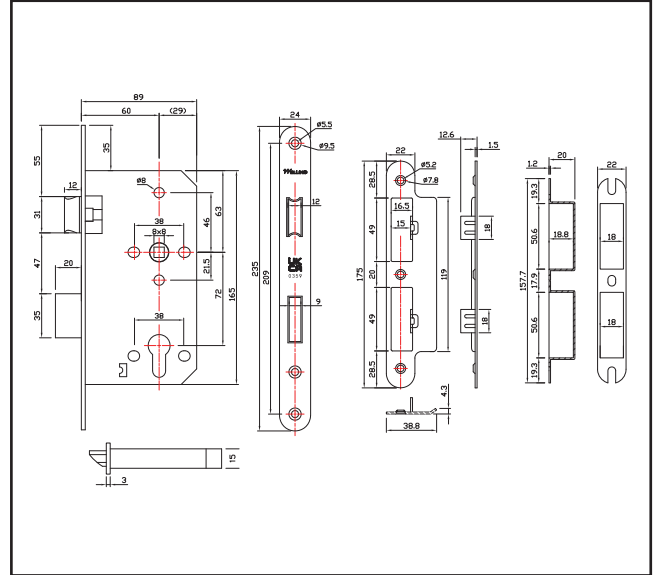
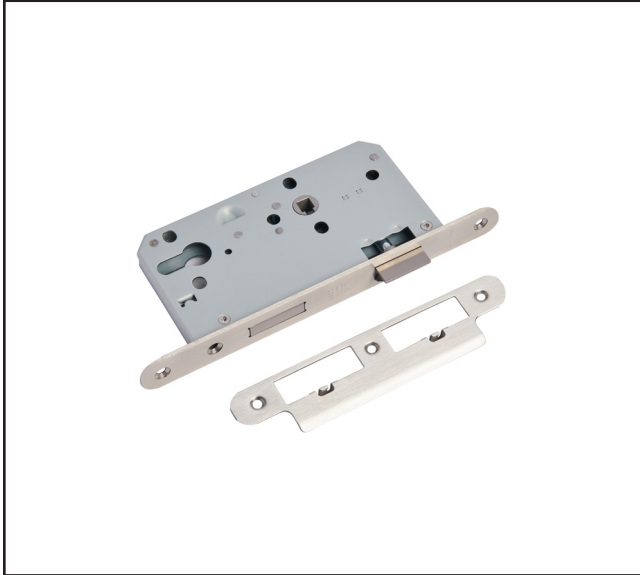


640.7010.01

DIN Euro Sashlock – 60mm backset – Radius Corners



Product Specification

Strike and Dust box included.

Specification

| | |
|---------------|--------------------------|
| Finish | Satin Stainless Steel |
| Backset | 60mm |
| Case Depth | 72mm |
| Follower Size | 8mm |
| Forend | Radius |
| Forend Size | L 235mm x W 24mm x T 3mm |
| Handed | Non Handed |
| UKCA Marked | Yes |
| Fire Rated | 240 Minutes |
| Tested | EN12209 |
| Tested | EN 1634-1 |
| Guarantee | 10 Years |
| | |



For more information please contact

01451 824110 | sales@wellinguk.com | www.wellinguk.com

Welling Ironmongery Ltd, Unit R1, Bourton Industrial Park, Bourton on the Water GL54 2HQ

