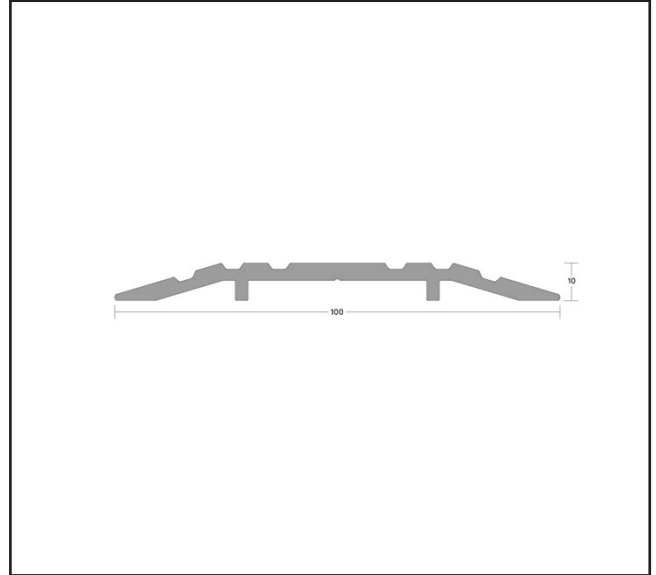


ZZ700.4101.11

Lorient LAS4100 Threshold Plate – 2100mm



Product Specification

Durable, medium duty aluminium threshold plate, 10mm high. It can increase the effectiveness of threshold seals by creating a firmer gasket contact.

Specification

Brand	Lorient
Finish	Silver Anodised Aluminium
Length	2100mm
Width	100mm
Height	10mm
Type	Double Door, Single Door
Sold as	Each

For more information please contact

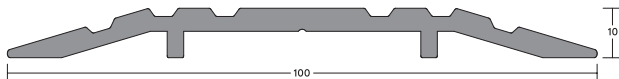
01451 824110 | sales@wellinguk.com | www.wellinguk.com

Welling Ironmongery Ltd, Unit R1, Bourton Industrial Park, Bourton on the Water GL54 2HQ

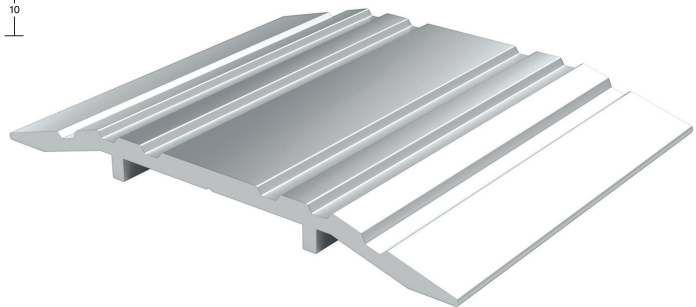
LAS4100

MEDIUM DUTY

Durable, medium duty aluminium threshold plate, 10mm high. It can increase the effectiveness of threshold seals by creating a firmer gasket contact. Quick and easy installation.



LAS4100



SYSTEM SPECIFICATIONS

Performance

- ▶ Protects against sound, smoke, weather, draught, light and insects when fitted with a suitable threshold seal.
- ▶ Provides an even surface underneath the door; suitable for wheeled traffic.

Location

- ▶ Single and double swing doors.

Use with

- ▶ Practically any drop or door bottom seal.

Material

- ▶ Aluminium.

Standard lengths

- ▶ 1m and 2.1m. Other lengths to special order.

Fixing

- ▶ Fixing screws are supplied.

Finishes

- ▶ Silver anodised aluminium.
- ▶ Bronze anodised aluminium.
- ▶ Black and light bronze anodised aluminium (non-standard - charges and lead times apply).
- ▶ Other powder-coated colour finishes (non-standard - charges and lead times apply).