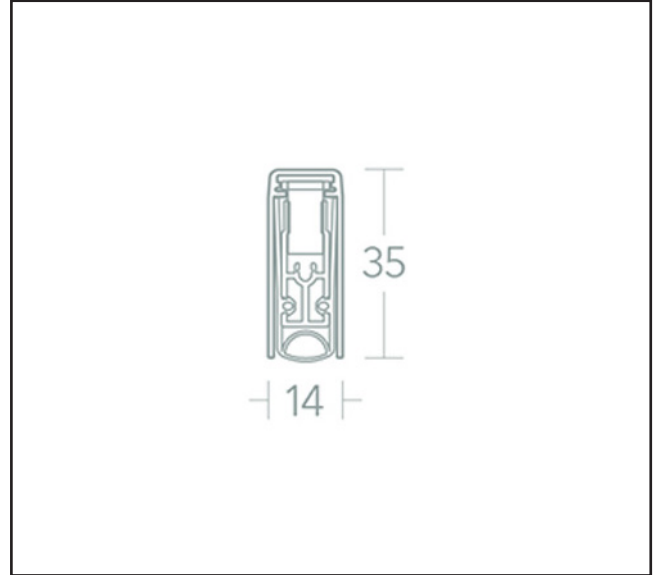
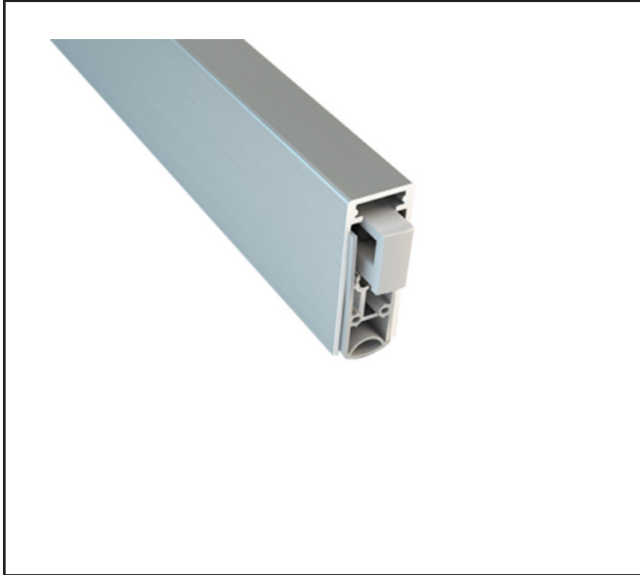


# NOR810

Mortice Drop Down Seal - 20mm Drop



## Product Specification

Application Bottom edge of acoustic timber doorsets

Fixing Rebated, held in place with end caps

Actuation Single

Drop down, maximum 20mm

Product Code	Overall Length	Cut Down Length	Max Cut Down	Finish
710.6320.11	320mm	240mm	80mm	Silver
710.6435.11	435mm	335mm	100mm	
710.6535.11	535mm	435mm		
710.6635.11	635mm	535mm		
710.6735.11	735mm	635mm		
710.6835.11	835mm	735mm		
710.6935.11	935mm	835mm		
710.6035.11	1035mm	935mm		
710.6135.11	1135mm	1035mm		
710.6123.11	1235mm	1135mm		

Drop down, maximum 20mm

## KEY FEATURES

Suitable for use on most fire doors  
Compliant with BS 476-22  
UL Approval  
Smoke tested in accordance with BS 476-31.1  
Acoustically tested in accordance with BS EN ISO 10140-2  
Certifire CF629  
1,000,000 cycle tested  
Self levelling

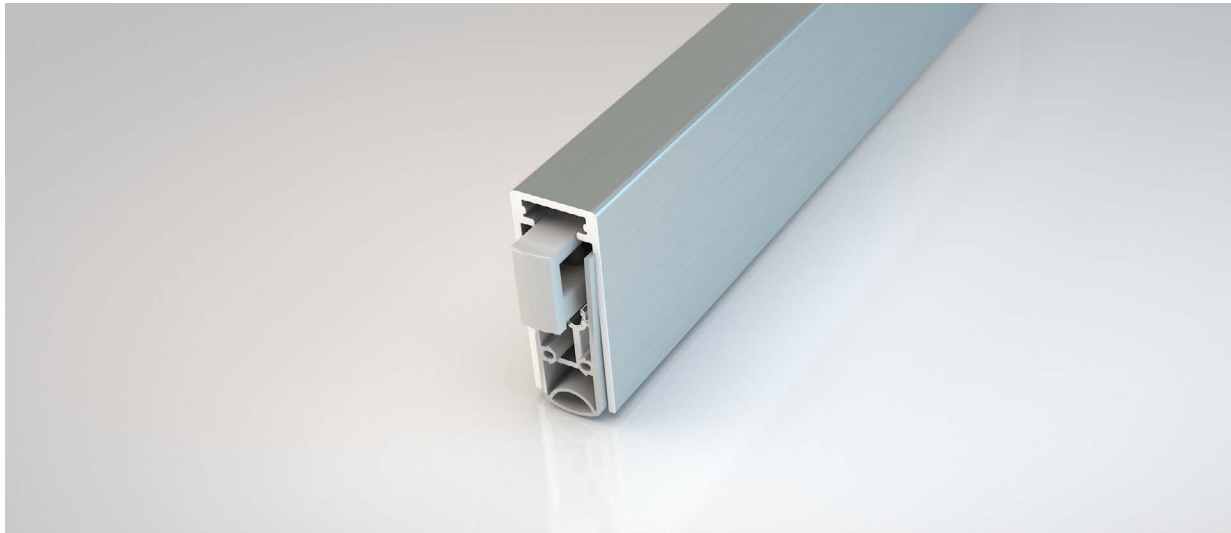
For more information please contact

01451 824110 | sales@wellinguk.com | www.wellinguk.com

Welling Ironmongery Ltd, Unit R1, Bourton Industrial Park, Bourton on the Water GL54 2HQ

## NOR810®

NORSOUND BY NORSEAL



### Application

Bottom edge of acoustic timber doorsets

### Fixing

Rebated, held in place with end caps

### Performance

Suitable for use on most fire doors  
Compliant with BS 476-22  
UL Approval  
Smoke tested in accordance with BS 476-31.1  
Acoustically tested in accordance with  
BS EN ISO 10140-2  
Certifire CF629  
1,000,000 cycle tested  
Self levelling

### Material

Aluminium, Silicone gasket

### Standard lengths (mm)

320, 435, 535, 635, 735, 835, 935, 1035, 1135, 1235,  
1335, 1435, 1535

### Minimum / Maximum length (mm)

320 / 1700

### Gap coverage (mm)

20

### Actuation

Single

### Cutback (mm)

Various, >100, 320 limited to 85

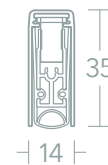
### Colour

Mill finish, Grey gasket

### Order codes

**NOR810 + Length** eg. **NOR810320** (320mm)

### Dimensions



 5 Regents Drive  
Prudhoe  
Northumberland  
NE42 6PX

 [norseal.co.uk](http://norseal.co.uk)

 [sales@norseal.co.uk](mailto:sales@norseal.co.uk)

 01661 830088

Registered in Companies House Cardiff No. 04317595 VAT Reg. No. 733 9466 08