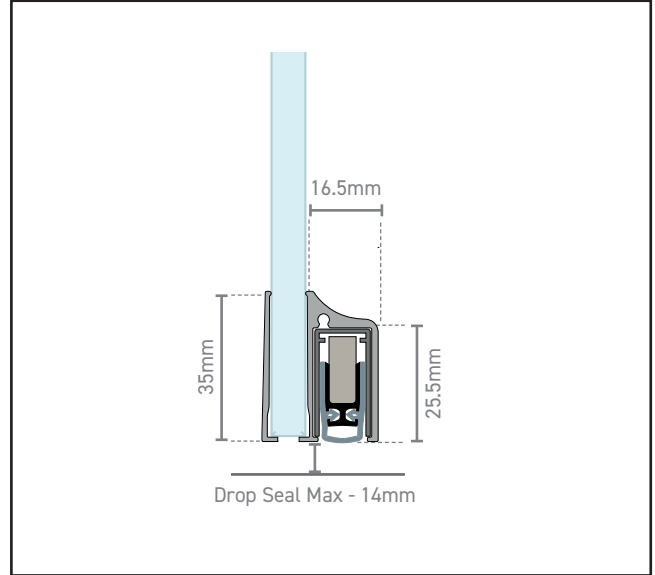
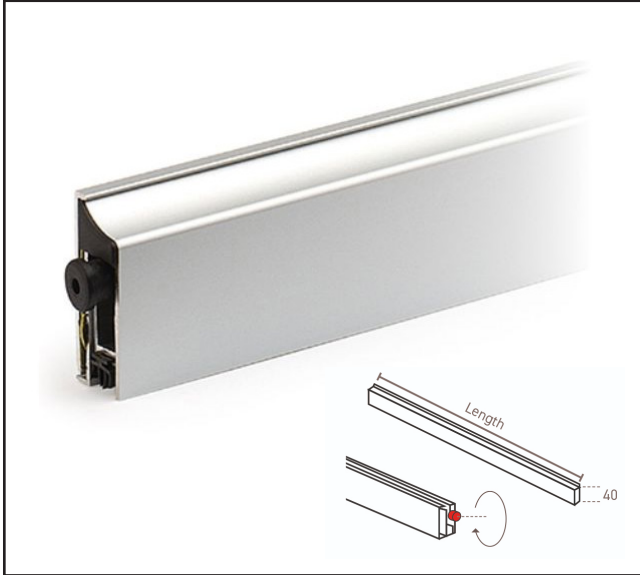


# SURFACE FIX GLASS DOOR DROP DOWN SEAL

Non Handed

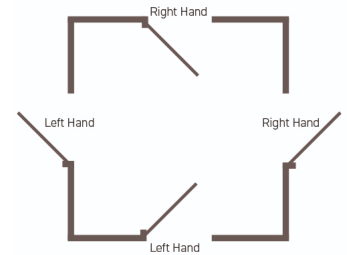


## Product Specification

Can be cut down by a maximum of 125mm

Suitable for use on both frameless glass partitions and aluminium framed doors in glass partitions

Self-adhesive fixing



Product Code	Overall Length	Cut Down Length	Glass Thickness	Finish
710.8630.11	630mm	505mm	10-12mm	Silver
710.8730.11	730mm	605mm		
710.8550.11	830mm	705mm		
710.8208.11	930mm	805mm		
710.8206.11	1030mm	905mm		
710.8630.39	630mm	505mm	10-12mm	Black
710.8730.39	730mm	605mm		
710.8550.39	830mm	705mm		
710.8208.39	930mm	805mm		
710.8206.39	1030mm	905mm		

Can be cut down by a maximum of 125mm. Suitable for use on both frameless glass partitions and aluminium framed doors in glass partitions.

## KEY FEATURES

Max Cut-Down 125mm  
Seal Drop Length 14mm  
Non Handed  
Sold as each

For more information please contact

01451 824110 | [sales@wellinguk.com](mailto:sales@wellinguk.com) | [www.wellinguk.com](http://www.wellinguk.com)

Welling Ironmongery Ltd, Unit R1, Bourton Industrial Park, Bourton on the Water GL54 2HQ