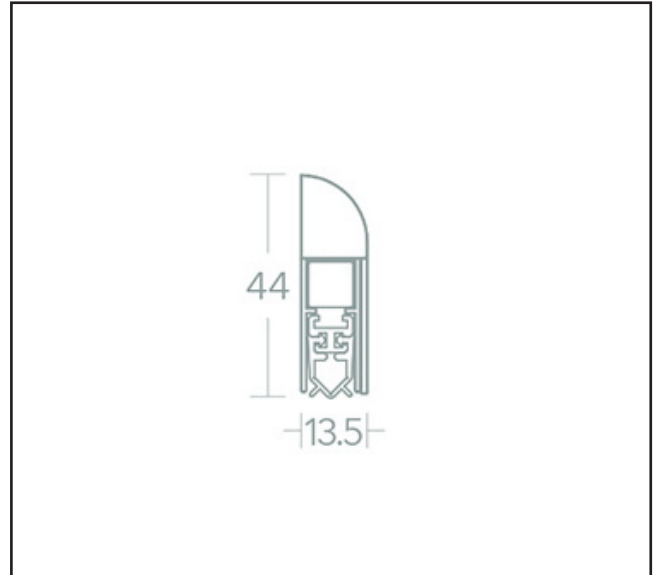
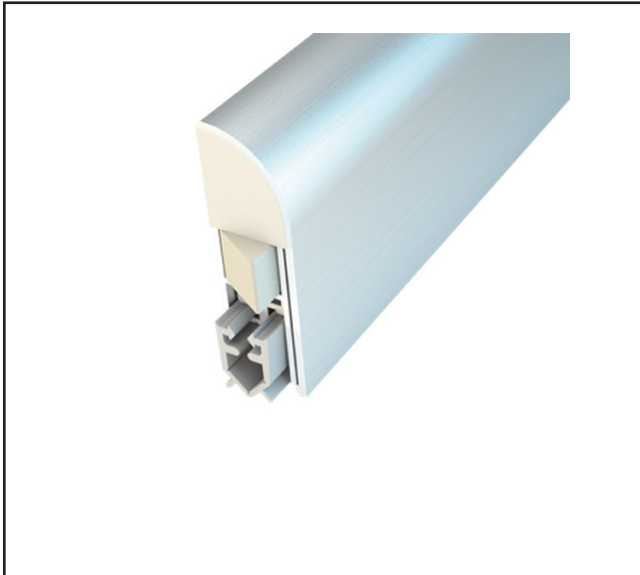


NOR820

Drop Down Seal - Surface Mounted - Max Cut Down 125mm



Product Specification

Installation of the NOR820 drop seal provides smoke and acoustic performance without the removal of timber from the door. Fitting of the seal is not detrimental to the doors performance for fire resistance. Surface mounted automatic drop seals may be used where the fitting of these does not require the removal of any core material.

Product Code	Overall Length	Cut Down Length	Max Cut Down	Finish	KEY FEATURES
710.8204.11	400mm	275mm	125mm	Silver	Application Bottom edge of acoustic timber or metal doorsets Screw Fixed Actuation Single Meets smoke requirements BS 8214 Acoustically tested in accordance with BS EN ISO 10140-2 Sold as each
710.8205.11	500mm	375mm			
710.8266.11	600mm	475mm			
710.8277.11	700mm	575mm			
710.8288.11	800mm	575mm			
710.8209.11	900mm	675mm			
710.8201.11	1000mm	775mm			
Can be cut down by a maximum of 125mm.					

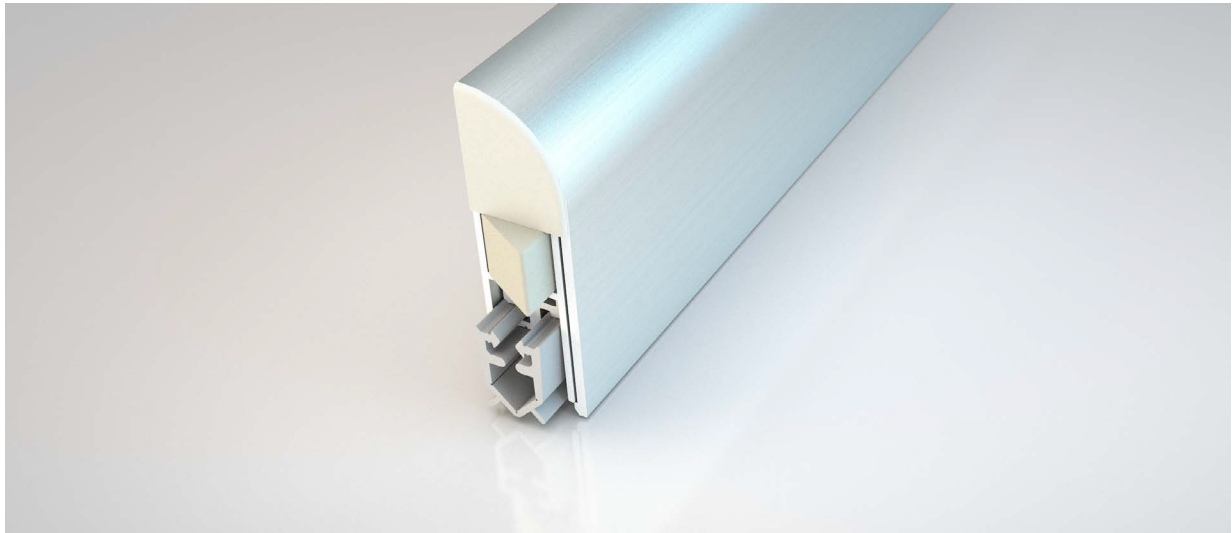
For more information please contact

01451 824110 | sales@wellinguk.com | www.wellinguk.com

Welling Ironmongery Ltd, Unit R1, Bourton Industrial Park, Bourton on the Water GL54 2HQ

NOR820

NORSOUND BY NORSEAL



Application

Bottom edge of acoustic timber or metal doorsets

Fixing

Screw-fixed

Performance

Meets smoke requirements BS 8214
Acoustically tested in accordance with
BS EN ISO 10140-2

Material

Aluminium (Satin Silver), PVC gasket (Grey)

Lengths (mm)

400, 500, 600, 700, 800, 900, 1000, 1100, 1200

Cutback (mm) / Maximum gap coverage (mm)

125, 130 (400 length only) / 12

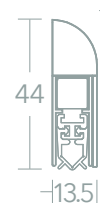
Actuation

Single

Order codes

NOR820 + Length + /S eg. **NOR820400/S** (400mm)

Dimensions



Installation of the NOR820 drop seal provides smoke and acoustic performance without the removal of timber from the door. Fitting of the seal is not detrimental to the doors performance for fire resistance.

Door manufacturers such as Falcon Strebord, Halspan, Flamebreak etc advise: Surface mounted automatic drop seals may be used where the fitting of these does not require the removal of any core material.

 5 Regents Drive
Prudhoe
Northumberland
NE42 6PX

 norseal.co.uk

 sales@norseal.co.uk

 01661 830088

Registered in Companies House Cardiff No. 04317595 VAT Reg. No. 733 9466 08