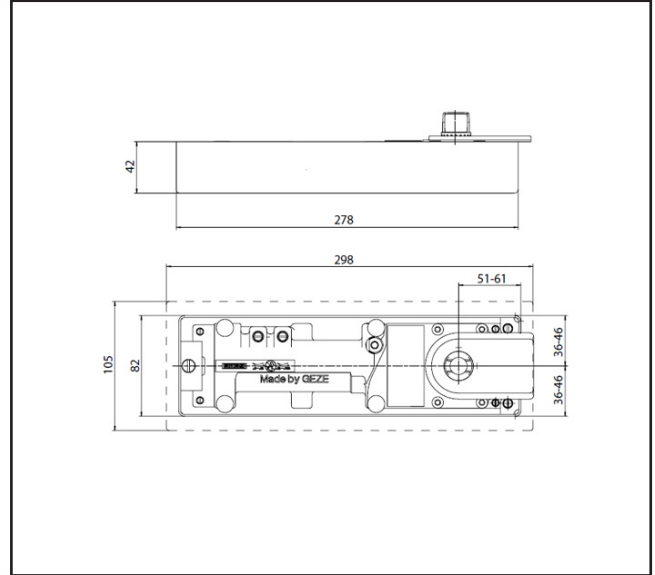
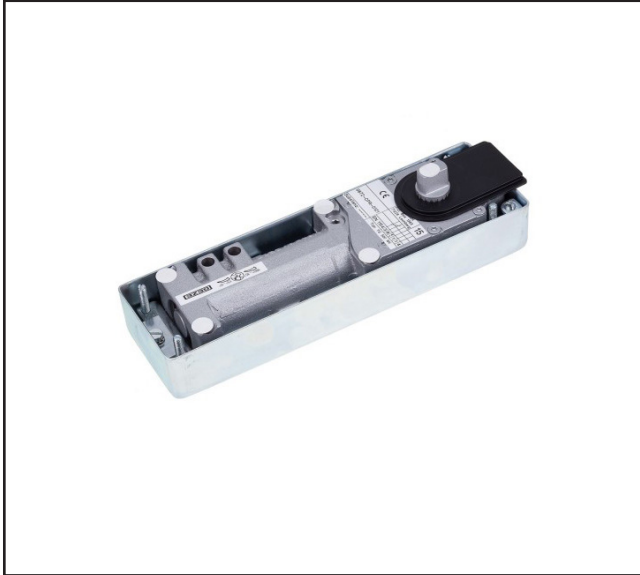


530.1500.01

GEZE TS500 NV EN1-4 Hold Open Floorspring and Spindle without Cover



Product Specification

Floor spring for single leaf single-action/double-action doors up to 1100 mm leaf width with optional hold-open device
Closing force with variable adjustment from EN1-4 and can be used for right and left hand doors without conversion.
Mechanical hold-open unit in the door closer with hold-open plus closing speed can be individually adjusted. Hydraulic latching action which accelerates the door shortly before it is closed and integrated back check, slows down doors that are thrown open forcefully.

Specification

Brand	GEZE
Power	EN1-4
Max Door Width	1100mm
Max Door Weight	150kg
Spindle Included	Yes
Cover Included	No
Backcheck	Mechanical
Hold Open	Yes
Adjustable closing speed	Yes
Latching action adjustable	Yes

For more information please contact

01451 824110 | sales@wellinguk.com | www.wellinguk.com

Welling Ironmongery Ltd, Unit R1, Bourton Industrial Park, Bourton on the Water GL54 2HQ