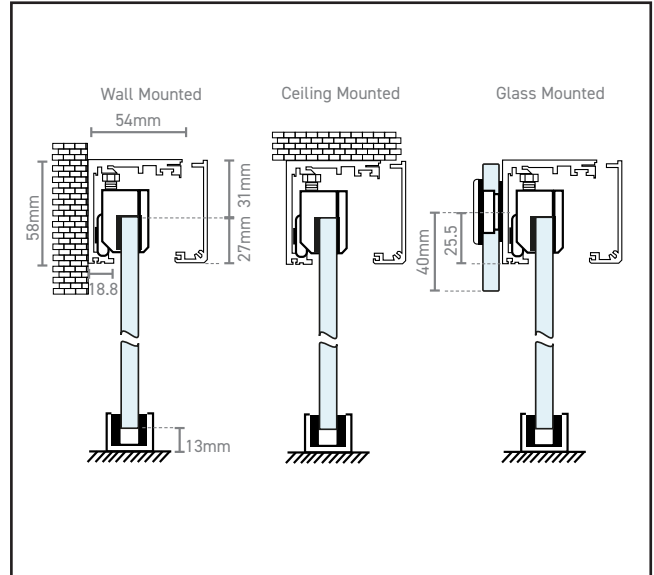
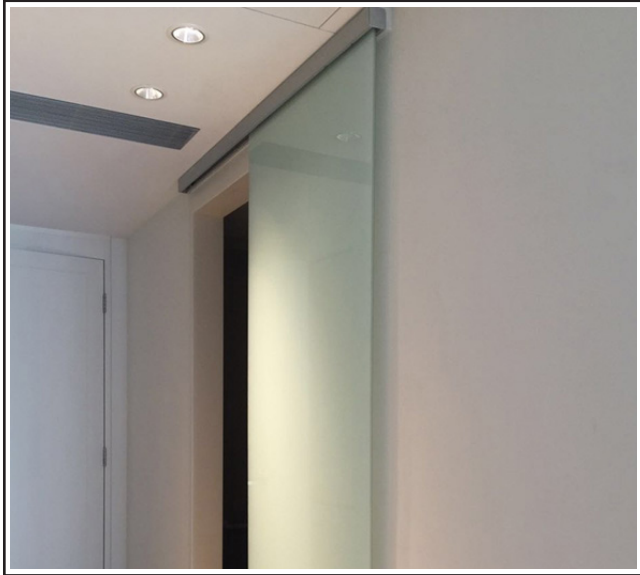


# 570.8000.01

UG Concealed Single Sliding Door Kit - 2000mm Track Length - 80kg



## Product Specification

Single Door

80kg Max. Weight per leaf

End Caps - x2

Stops - x2

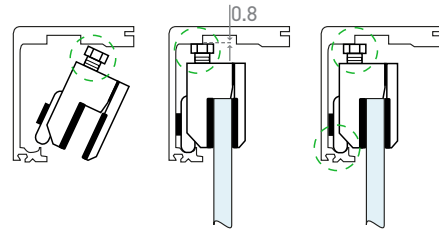
Floor Guide - x1

Carrier - x2

## Specification

Finish	Satin Stainless Steel
Track Length	2000mm
Type	Single Door
Max Door Weight	80kg
Cycle Tested	100,000
Glass Thickness	10-12mm

Anti-falling



Our new UG sliding glass door system, which covers a wide range of applications and includes options such as soft-close and synchro-opening/closing.

EN 1527 approved - tested to 100,000 cycles ensuring long durability with silent movement

One adjustable screw for +/-1/8" (3.5mm) height adjustment and the anti-falling in front system

A single track that is suitable for wall, ceiling and glass mounted applications

Made to measure carriage and track length, cutting options available

Create a sliding door system that suits each project requirement with our technical advisors, from a rubber stopper to hydraulic soft closing stopper or synchronized double door system, we are here to help. The UG sliding door system is ideal for a range of uses in offices, living spaces and pocket doors, designed with no visible clamping as the parts are hidden within the compact tracking.

For more information please contact

01451 824110 | sales@wellinguk.com | www.wellinguk.com

Welling Ironmongery Ltd, Unit R1, Bourton Industrial Park, Bourton on the Water GL54 2HQ